



*Steering a safe course through our retirement years*

## REBUS CLUB OF GULF HARBOUR

**Affiliated to Rebus NZ Incorporated**

**Established 25<sup>th</sup> September 2019, Rebus Club No: 19106**

**Bank a/c details for direct credits: 12-3084-0029743-00**

**Website: [www.rebus-gulpharbour.nz](http://www.rebus-gulpharbour.nz)**

**Meetings: 9.30 am, second Wednesday each month, except January,  
at Gulf Harbour Yacht Club, Laurie Southwick Parade, Gulf Harbour**

**Apologies: to: Pam Warner, 021 146 5753, or [pambiggs2003@yahoo.com.au](mailto:pambiggs2003@yahoo.com.au)**

<b>President:</b> Neil Wild	027 270 1005
<b>Vice President:</b> Gill Wild	027 297 3414
<b>Secretary:</b> Pam Warner	021 146 5753
<b>Treasurer:</b> Keith Handley	021 426 202
<b>Membership:</b> Christine Handley	021 681 513
<b>Newsletter:</b> Neil Wild/Gill Wild	
<b>Host/Speakers:</b> George Tregidga & Ken Daniels	09 424 5322

### **\* Positions Off Committee**

<b>* Greeter:</b> Pam Naylor	424 4557
<b>* Website:</b> Graeme McIntosh	424 7115
<b>* Welfare:</b> Monica Steele	09 558 8642
<b>* Photography:</b> Graeme McIntosh	424 7115

### **CLUB MEETING: Wednesday 10<sup>th</sup> August 2022 at 9:30am**

**Note rules for attendance under COVID Traffic Light System Orange:**

Our Club Meetings are back to normal.

It is your choice if you want to wear a mask or not.

**Club Speaker: Graham Norton**

**Guest Artist: Colin Parris** an entertainer will perform a short version of his show.

Introduced by George Tregidga, thanked by Judi Lee.

**Members: Please remember to bring small denomination notes for Entry and Sales Table. \$\$**

### **From President Neil:**

The temperature has dropped with increased wind and rain disrupting some activities, however our Club has been very busy again this month.

**Ramblers Group** is well attended showing full pioneering spirit providing it is not raining.

Milldale ramble 11/07/22 through the new subdivision saw 13 dedicated ramblers and 4 guide dogs. The new super duper subdivision has numerous bike lanes, footpaths, crossings and no parking! Off to Millies for compulsory coffee and sticky bun.

The 4 beaches 18/07/22 Whangaparaoa ramble had 15 keen ramblers. Somehow we missed 3 of the beaches and ended up in somebodys Tindals bay garage looking at Peter O's and Pieter H's car collection. Finally we made it to Manly beach to get some sand all over my clean shoes. Several others joined us at Manly Café for the sticky bun and coffee.

The 9 Km Wenderholm Ramble 25/07/22 was shortened to a 9m dash from the car to Bake'n Brew, Orewa where 17 members attended the compulsory coffee and sticky bun.

The Shakespear Regional park ramble 1/08/22 led by our trainee ramble leader Garth D, and was attended by 17 loyal ramblers. Walked to the waterfall, then across to see the baby lambs, Photo frame and wetlands before heading off for a coffee and sticky bun at Gulf Harbour's Cherry Café.



Milldale ramblers 18/07/22



Milldale's boulevard of footpaths, cycle lanes and crossings, just no car parking.





4 Beaches ramble 18/07/22



Happy dry ramblers at Bake n Brew Orewa 25/07/22





Shakespeare Regional Park Waterfall Ramble

### **Mah Jong**

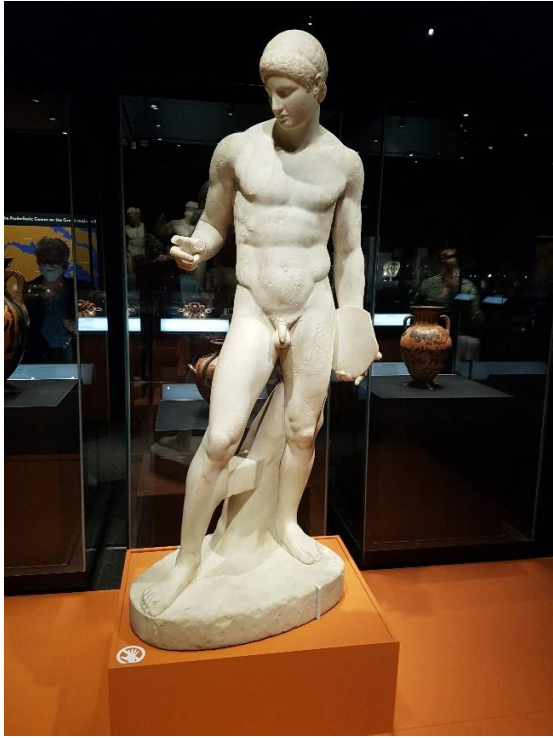
Mah Jong Group meets at 1.30 pm every Wednesday afternoon. Members take turns at hosting the group which is run by Verna Harford.



10 knowledgeable members plotting to win Mah Jong 27/07/22

## CBD Explorers

CBD Explorers trip to Auckland Museum to see the ANCIENT GREEKS display (on loan from the British Museum) was a great day out. It only rained when we had to walk outside from the bus to the Museum, a weather feat that was miraculously repeated on the way home. Thanks Judi for another wonderful trip.



Marble Statue (425 – 400BC) of a Greek discus thrower dressed in their normal sporting attire. Yes that's right. To stop themselves from tripping over their Loincloths, all Greek athletes performed Nude. The ancient Greek word for nude was *gymnos*, from which we get the modern word *gymnasium*.



Nike gazing at her reflection. Terracotta 300 – 200 BC .





Some of the Ancient Greek Explorers waiting for their ferry home.

## Dine Out Group

The dine Out Group had a very successful dinner at Maison Thai Restaurant, Manly 27/07/22. George Tregidga organized a set menu with 4 entree's and 4 shared main course dishes each. Very tasty and good value. Slight hiccup as someone forgot to pay, leaving George to make up the shortfall. Thanks George.







3 tables full of happy contented diners at Maison Thai

## KEY ACTIVITIES AT OUR CLUB MEETING

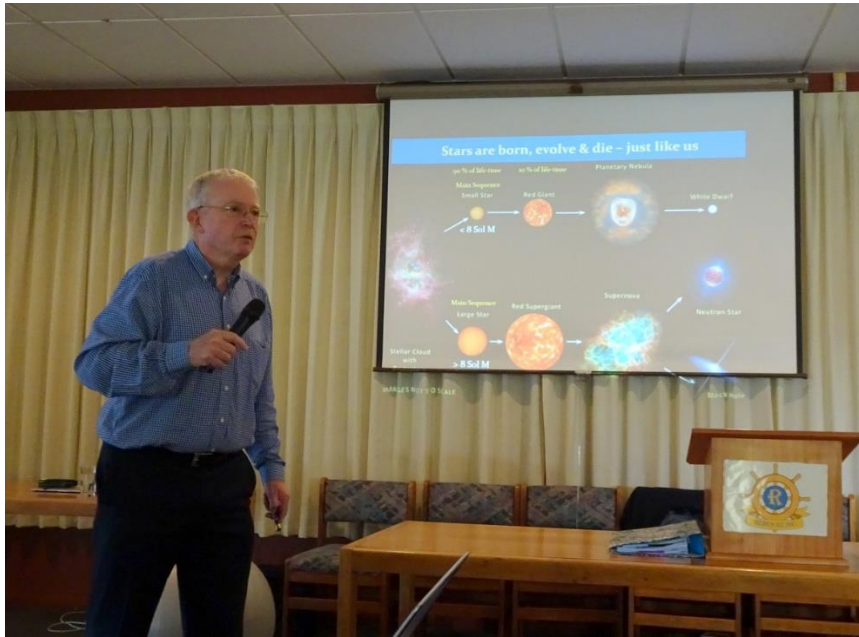


New July inductee Vince Reidy. Welcome aboard.



Club speaker Ken Daniels talks about his very interesting life.





Dr Chris Benton in full flight



Dr Chris Benton being thanked by George Tregidga

July guest speaker Dr Chris Benton gave a very interesting and enthusiastic talk on "The night sky" enjoyed by all.

### Club's mid year lunch at Hello Manly

#### Mid year Club Lunch 13/07/22

Our Rebus club's mid year lunch at Hello Manly was well attended and enjoyed by all. The 3 course tasty meal with a glass of wine was good value. Thankyou Christine for organizing.

Next time, we will take the photos when we start to eat so hungry members have the time to watch the little birdie!







3 tables of contented club members socialising flatout.



**No club member has a Birthday in August! (More chocolates for the committee)**



## TRIPS AND EVENTS

### Thursday 18<sup>th</sup> August – Visit Kaipara Coast Sculpture Gardens then drive to Lunch at Wade Hotel.

Meet at car park, 4 square, Gulf Harbour to car share and ready to depart at 9.00am sharp.

Drive to Kaipara Sculpture Gardens (1481 Kaipara Coast Highway, Kaukapakapa.) Approx 35km about 45mins.

**Route** via Silverdale onto Pine Valley Rd, Turn right onto Kahikatea Flat Rd and travel through Waitoki. Turn right onto Kaipara Coast Highway (SH16) and travel through Kaukapakapa approx. 5.5km to the Kaipara Sculpture Gardens on your left.

**Entrance Fee** \$10.00 per person, pay on arrival. Tea, Coffee and sticky bun (scone with cream and jam) \$8.00 per person.

The visit comprises a 1 km trail through approx. 40 sculptures ( there are exits for shorter options) and a large plant centre and nursery.

Depart Sculpture Gardens at 12.30pm to Wade Hotel, Tavern Rd Silverdale. (25 mins about 23 km.)

**Lunch at Wade Hotel – Buffet \$35.50 per person** (individuals pay on the day. Cash bar, order and pay for your drinks at the bar.)

#### **Menu**

Bread and dips.

Grilled market fish in creamy parsley sauce

Herb & mustard Beef rump with bearnaise sauce.

Salads - Coleslaw – Green salad - Pasta salad

Apple crumble with custard

Chocolate brownie with fresh cream.

Tea or coffee.

**Contact Peter Odendaal 021 02566903** to put your name on the list.

### AUCKLAND ZOO TRIP – Thursday 22<sup>nd</sup> September

Meet at carpark, Edith Hopper Park to car share and be ready to leave at 9.30am sharp. Drive to Auckland Zoo carpark at Motions road, Western Springs, Auckland (approx. 45km – 55mins).

Pay \$19.00 Gold card entry fee at Zoo on arrival. Gill Wild (Zoo volunteer for 15 years) will guide you around the zoo. We will break for lunch.

You can either bring your own lunch, or purchase it from the Zoo Café. Expect to leave Zoo at 2.30pm to travel back to Edith Hopper Park.

#### **Driver Instructions**

Drive to Silverdale and take State Hwy 1 South down and cross Auckland Harbour Bridge. Stay in middle 2 lanes and exit State Hwy 1 and take State Hwy 16 West towards Helensville. Proceed and take Exit 6 to St. Lukes Road (Marked ZOO/MOTAT) Stay in left lane and turn right onto St. Lukes Rd, then turn left onto Great North Road. Travel approx. 0.5km and turn right at traffic lights, into Motions Road. Turn right into Zoo carpark. (Watch out for Trams) We will all meet at 10.30am inside the zoo at the ticket office. If you are running late, phone Gill.

**Contact Gill Wild 027 297 3414** to put your name on the list.



## SPECIAL INTEREST GROUPS:

If you want to participate in any of the following interest groups, please make sure you let them know.



**The Ramblers Group**: Contact: Peter Odendaal, 021 025 66903, [peterodendaal@xtra.co.nz](mailto:peterodendaal@xtra.co.nz)



**CBD Explorers**: Contact: Judi Lee, 029 894 2522, [leeja@xtra.co.nz](mailto:leeja@xtra.co.nz)



**Dine Out Group**: Contact: George Tregidga, 09 424 5322, [gwandcatregidga@xtra.co.nz](mailto:gwandcatregidga@xtra.co.nz)



**Mah Jong Group**: Contact: Verna Harford, 021 077 4325, [vernaharford@gmail.com](mailto:vernaharford@gmail.com)



**Classic Cars Group**: Contact: Peter Odendaal, 021 025 66903, [peterodendaal@xtra.co.nz](mailto:peterodendaal@xtra.co.nz)

**Our Website** is a useful tool and receives many visits during each month. If you are not a regular viewer, simply click on this highlighted link [www.rebus-gulpharbour.nz](http://www.rebus-gulpharbour.nz) to go straight to the site. Once you are on the site, you might like to “save” it as a favourite on your computer.



**WELFARE:** Our Welfare Person is **Monica Steele**. If you are unwell, or if you know of someone who is, or who needs a helping hand, a car ride, or any assistance, please let Monica know if the Club can help in any way. **Contact Monica Ph: 09 558 8642.**

## **Sales Table**

Jean McIntosh and Pauline Dowling will be running the **sales table** again. You can bring any surplus Plants, baking, books, knitting etc, or failing that, your wallet. Remember your items not sold will require you to take them home.

***That's all for now folks.***

***See all you wonderful people at this months Club Meeting.***

***Neil.***

**Rebus Club of Gulf Harbour** is grateful for support from New World, Stanmore Bay.

